

Better Care Fund 2023-25

Planning update

23rd May 2023

TOWER HAMLETS
TOGETHER

*Delivering better health
through partnership*



www.towerhamletstogether.com

#TH2GETHER



Better Care Fund Overview

- The Better Care Fund (BCF) is now into its 8 year. The intent of the programme is to integrate, or pool NHS and Local Authority budgets to create a seamless service for the general public.
- The BCF is not new money, but involves the alignment or pooling of existing budgets
- The purpose of this report is to brief the Board on the 2023-25 planning guidance for the Better Care Fund which is due to be submitted on the 28th June.

The four BCF national conditions

1. National condition 1: Plans to be jointly agreed
2. National condition 2: Enabling people to stay well, safe and independent at home for longer
3. National condition 3: Provide the right care in the right place at the right time
4. National condition 4: Maintaining NHS's contribution to adult social care minimum spend to be paid by the ICB. This has been uplifted by 5.66%

Tower Hamlets Better Care Fund 2022/23



- The Better Care Fund (BCF) is aimed at bringing together health and social care organisations to plan, fund and commission integrated services.
- Our first BCF Plan was developed in 2016-17 and has effectively been rolled over year on year due to national delays in issuing guidance and Covid-19.
- In Tower Hamlets we rolled over our 2021/22 BCF plan into 2022/23. This was following a review of our BCF in the previous year and based on national advice
- The BCF is received by the ICB and amounted to £24.4m in 2022/23. This was an increase of 5.6% from that received in 2021/22.
- The Disabled Facilities Grant (£2.3m), Improved Better Care Fund and Winter Pressures Grant (£16.8m) are received by the Council. The Winter Pressures Grant has been merged with the iBCF since 2020/21
- Both the ICB and Council make additional contributions to the pooled fund as of £13.m and £0.77m respectively.
- This provides a total pooled fund of £57.4m in 2022/23.

2022/23 Plan	£m
Minimum ICB Contribution	24.4
Additional ICB Contribution	13.0
ICB TH Total	37.4
iBCF & Winter Pressures	16.8
DFG	2.3
Additional LA Contribution	0.77
LA Total	19.9
BCF Total	57.4

Better Care Fund 2023-25



- The 2023-25 guidance was issued on 4th April 2023 and expects local systems to submit final plans to the national team on 28 June 2023.
- This is a two year plan with an opportunity to refresh the plan in 2024-25
- Quarterly BCF monitoring will begin again (this had been paused following Covid-19) in quarter 2
- BCF objectives link to priorities on reducing pressure on urgent emergency care and social care as well as tackling pressures in delayed discharges
- There are expectations to jointly plan and submit capacity and demand plans for intermediate care
- The Adults Social Care Discharge Fund is within the BCF
- There are five national metrics one of which is new this year:
 1. Avoidable admissions
 2. Falls (new to 23-25 plan)
 3. Discharge to normal place of residence
 4. Proportion of older people (65+) who were still at home 91 days after discharge from hospital into
 5. Permanent admissions to residential and nursing care homes (65+) per 100,000 population.
- Other than the iBCF (a grant paid to local authorities) the BCF is not additional money and is instead repurposed from existing revenue.
- How this money is allocated as well as risk and gain share agreements are reviewed annually and form the basis of the Section 75 agreement between the local authority and the ICB.

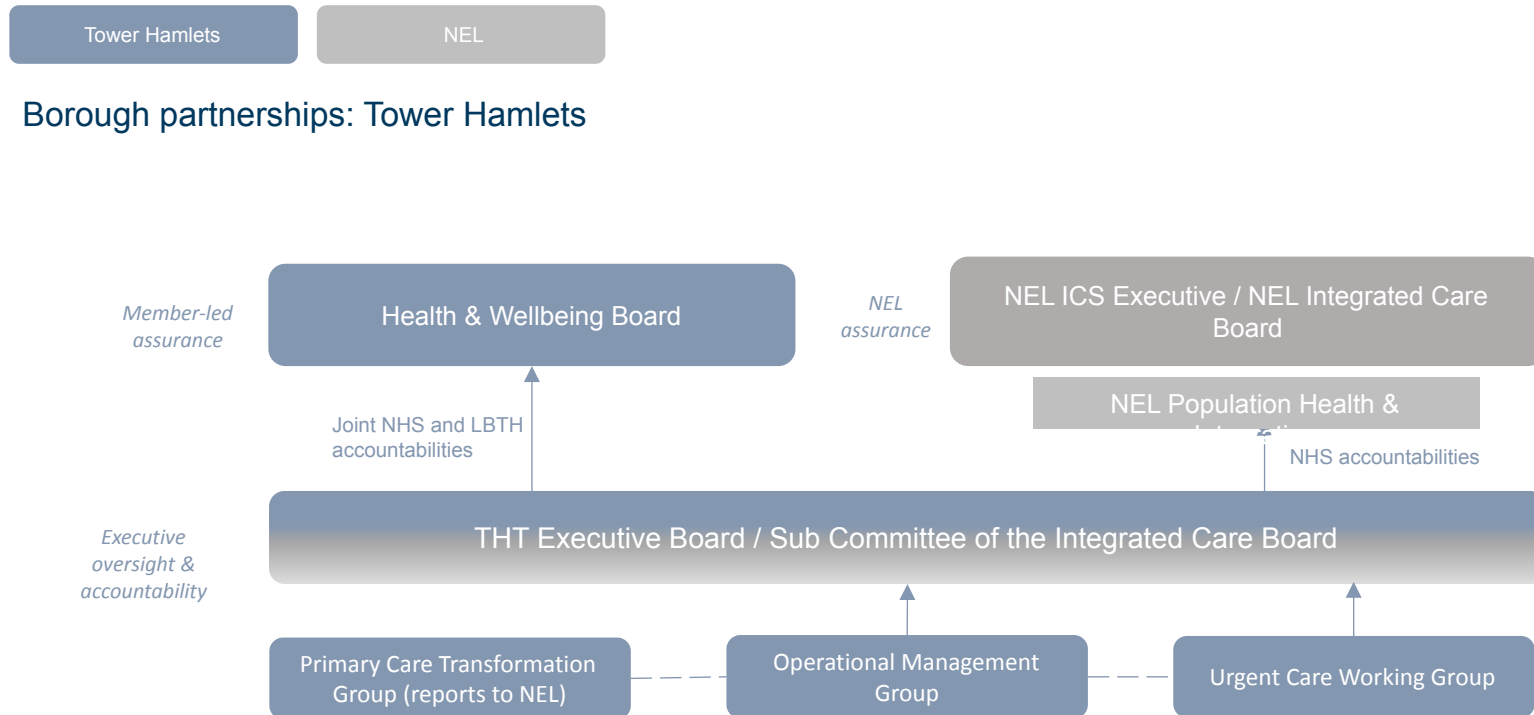
Timetable and sign off

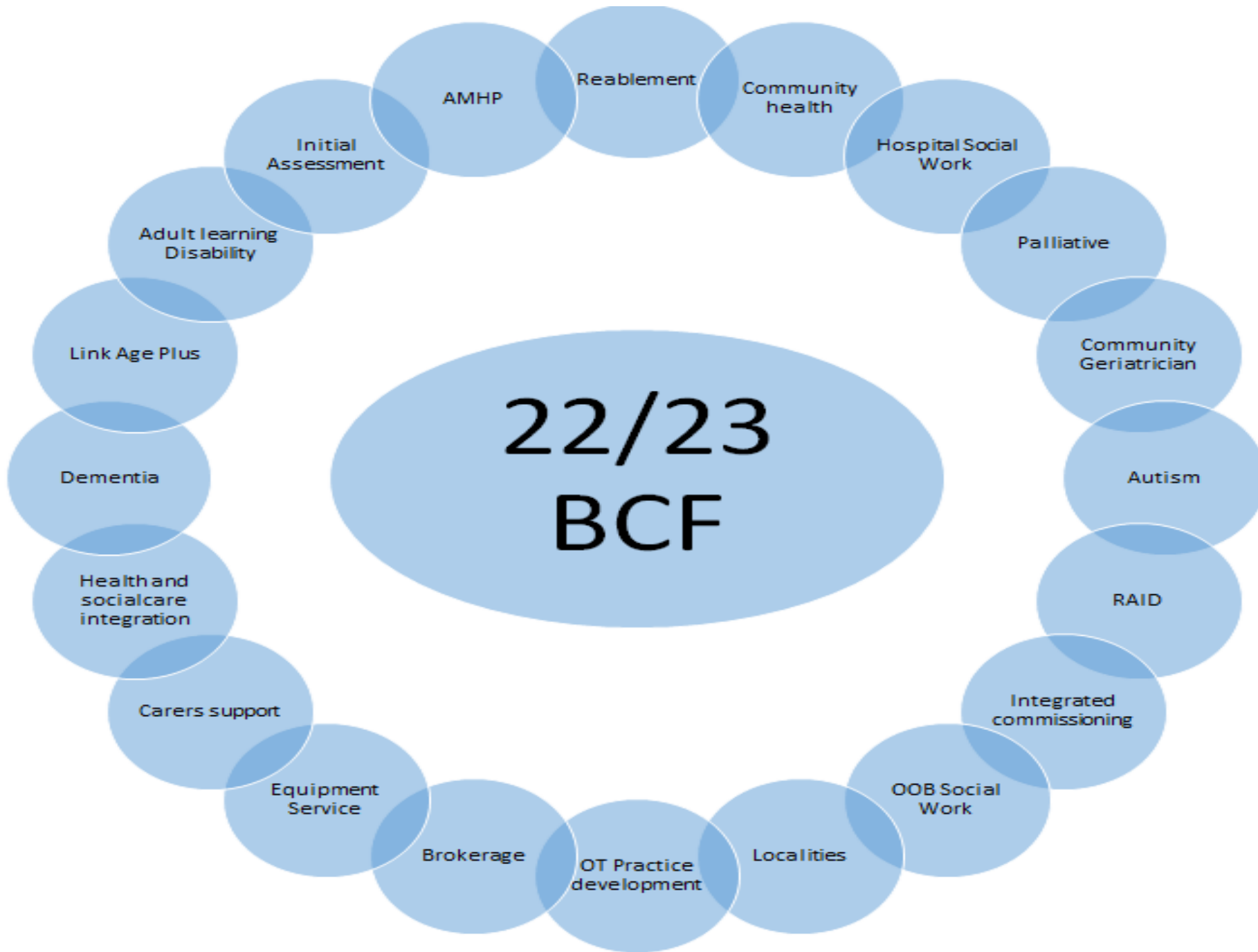
BCF planning requirements published	4 th April 2023
Presentation on BCF 2023-25 requirements to the THT Board	4 th May
Presentation on BCF 2023-25 requirements to the Health and Wellbeing Board	23 rd May
Optional draft BCF planning submission (including intermediate care capacity and demand plan) submitted to regional BCF team	19 th May
Sign off process with LBTH CEO, HWBB Chair and ICB	Early –mid June
BCF planning submission (including intermediate care and short term care capacity and demand plans: and discharge spending plan) from local HWB areas (agreed by ICBs and local government)	28 th June
Retrospective sign off from Health and Wellbeing Board	20 th July
Scrutiny of BCF plans by regional assurers, assurance panel meetings and regional moderation	28 June – 28 July
Regionally moderated assurance outcomes sent to BCF team	28 July
Cross regional calibration	3 August
Approval letters issued giving formal permission to spend (NHS minimum)	3 September
All section 75 agreements to be signed and in place	31 October

Better Care Fund Sign off & Governance



- The Health and Wellbeing Board is responsible for approving BCF Plans
- The sign off will need to be done retrospectively due to the required time line. However, Board members will be given the opportunity to input and comment remotely prior to the plans submission.





- In 2022/23, elements of various services were included in BCF
- 37 schedules totalling £56.9 million
- List of schedules has been incrementally developed rather than strategically planned

What's likely to be included in our Better Care Fund 23-25?



- Roll over of schemes from 22/23 to 23/24 with national uplift of 5.66% to social care and community income applied
- Complete a review of BCF spend
- Consider further alignment and pooling of budgets from 24/25 when we have the opportunity to refresh BCF – potential to increase pool for out of hospital budgets within the BCF? Spend 23/24 working on this
- The goal of pooling (and alignment) is to improve outcomes, improve people's experience of using services, and achieve greater system efficiency
- Pooled and aligned services (both in and out of the BCF) will also form a key component of the relationship between 'Borough Based partnerships' and Integrated Care Systems (ICS)
- A review was undertaken pre-Covid to look at which service areas would be suited for pooling (or aligning). As part of this review we looked at the service here.

Is there Board appetite to increase the BCF and to consider out of hospital budgets from 2024/25?

